



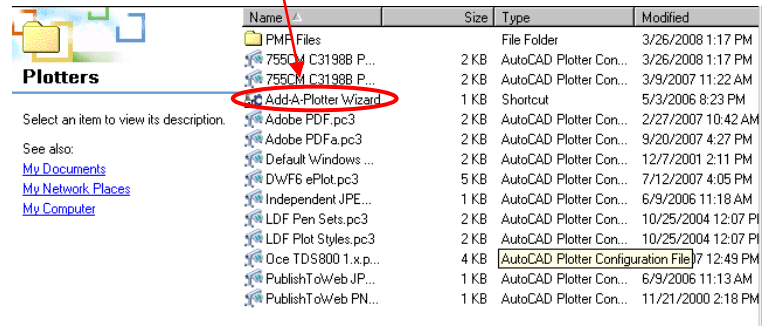
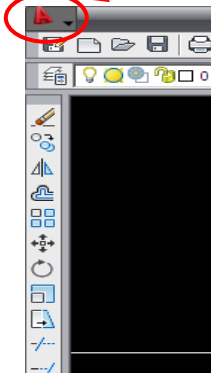
Instructions for Autocad 2010-2012

HOW TO ADD A PLOTTER TO AUTOCAD VERSIONS 2010-2012

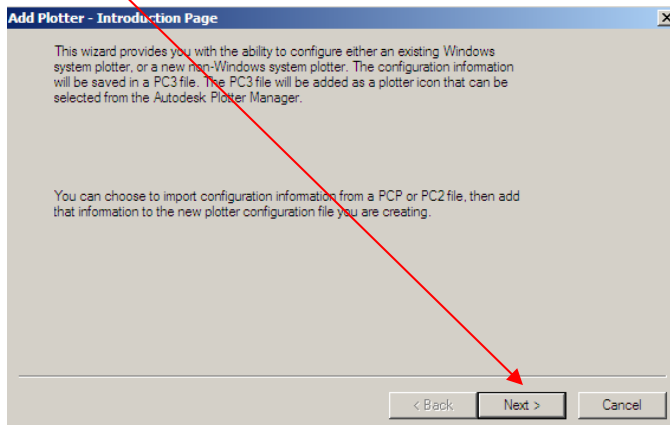


How to “ADD A PLOTTER” TO AUTOCAD 2010-2012

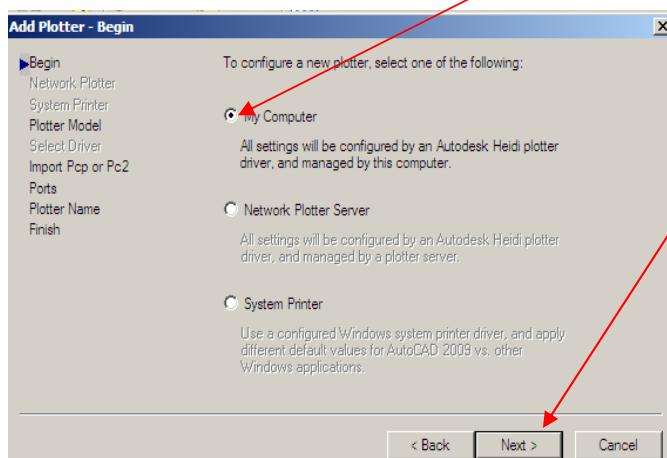
1. SELECT “PRINT” FROM THE FILE MENU PULL DOWN. THE MENU BAR IN 2010-2012 IS HIDDEN AND CAN BE FOUND BY LOCATING THE RED “A” ON THE TOP LEFT OF THE ACAD WINDOW AND CLICKING ON THE DOWN ARROW NEXT TO IT. HIGHLIGHT “PRINT” BY HOVERING OVER IT. ON THE MENU THAT OPENS SELECT “MANAGE PLOTTERS”. WHEN THIS WINDOW OPENS, DOUBLE CLICK “ADD A PLOTTER WIZARD” TO START THE INSTALLATION.



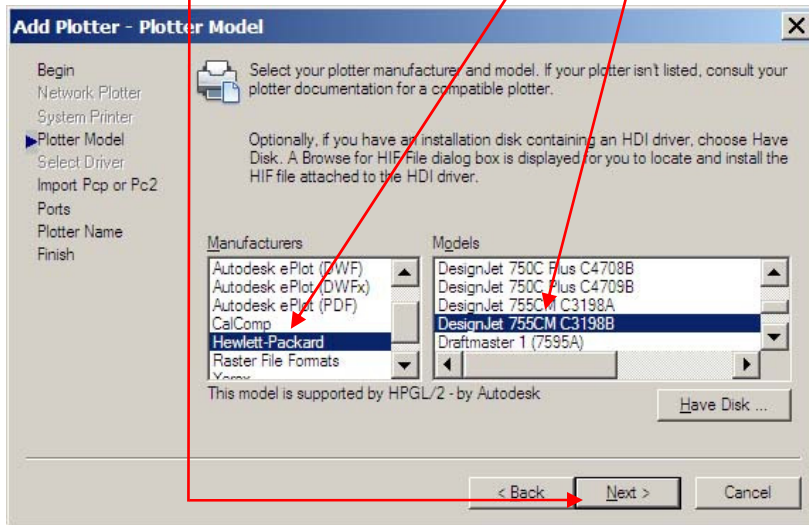
2. SELECT “NEXT” FROM ADD A PLOTTER INTRODUCTION DIALOGUE.



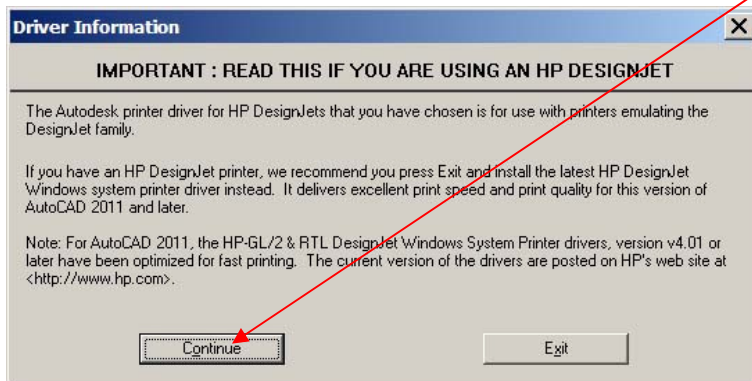
3. ON “ADD PLOTTER – BEGIN” SELECT “MY COMPUTER”, CLICK “NEXT”.



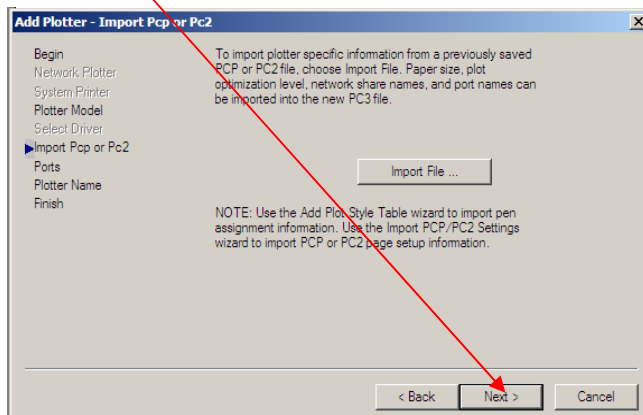
4. FROM "PLOTTER MODEL" SCREEN, SELECT "HEWLETT PACKARD" FROM THE MANUFACTURER BLOCK AND "DESIGNJET 755CM C3198B" FROM MODELS BLOCK. CLICK "NEXT".



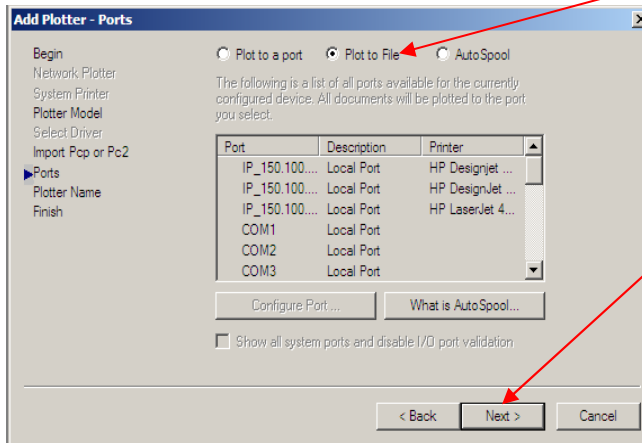
5. WHEN "DRIVER INFORMATION" WARNING APPEARS CLICK "CONTINUE".



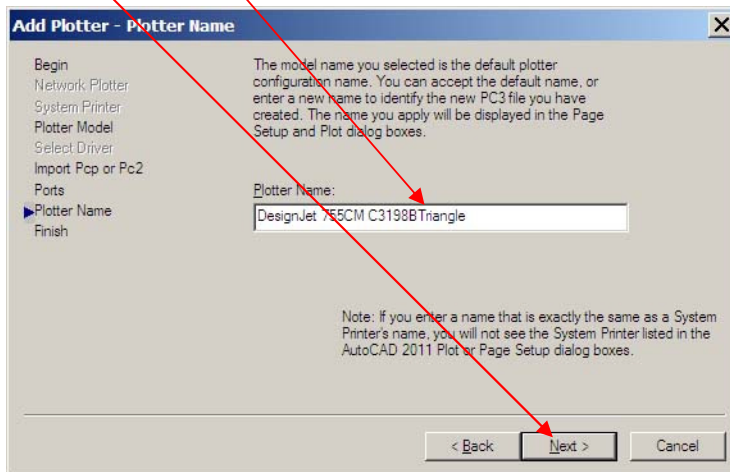
6. CLICK "NEXT" ON THE "ADD PLOTTER – IMPORT PCP OR PC2" SCREEN.



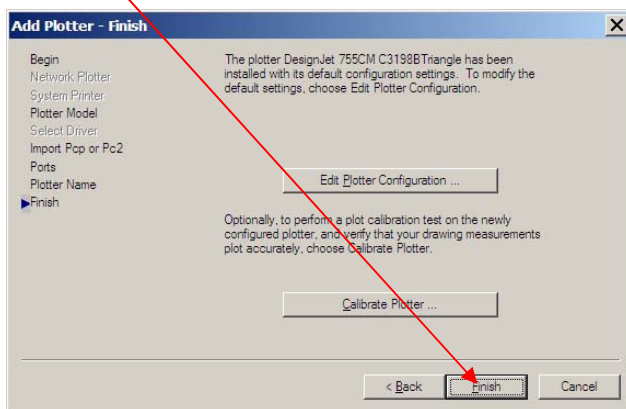
7. ON THE “ADD PLOTTER - PORTS” SCREEN SELECT “PLOT TO FILE”, CLICK “NEXT”.



8. ENTER “TRIANGLE” AFTER “DESIGNJET 755 CM C3198B” IN “ADD PLOTTER - PLOTTER NAME” WINDOW, (YOU MAY ENTER YOUR OWN PRINTER IDENTIFIER HERE IF YOU WISH.) CLICK “NEXT”.



9. CLICK “FINISH”



YOU HAVE NOW CREATED A PLOTTER FOR PRINTING AT TRIANGLE.