



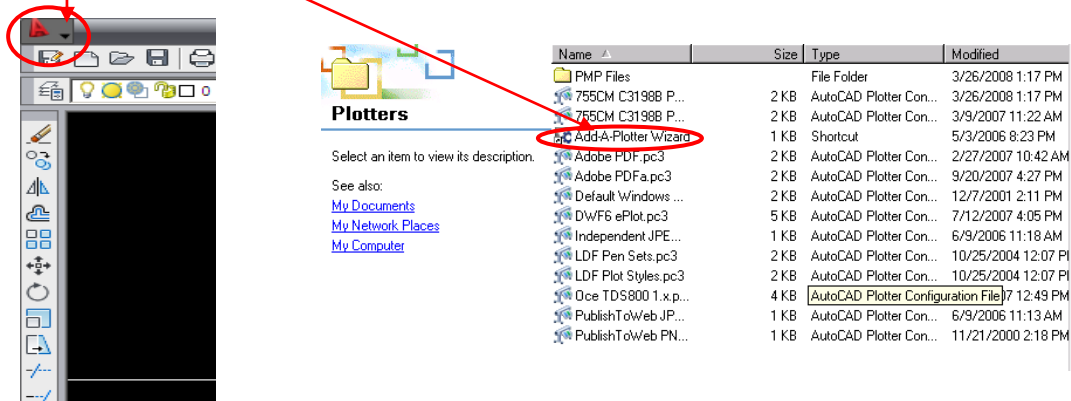
## Instructions for Autocad 2006-2009

# HOW TO ADD A PLOTTER TO AUTOCAD VERSIONS 2006-2009

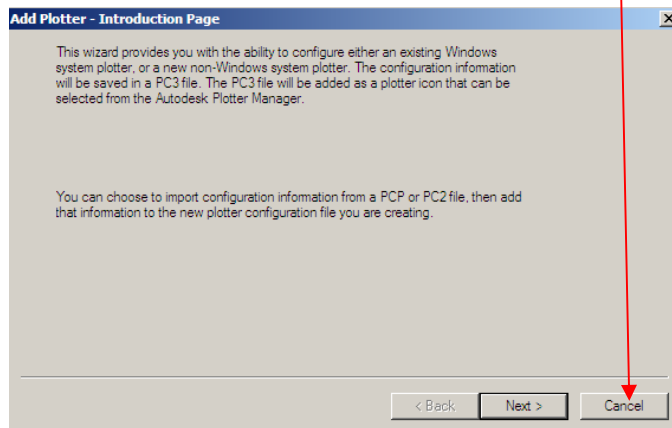


# HOW TO “ADD A PLOTTER” TO AUTOCAD 2006-2009

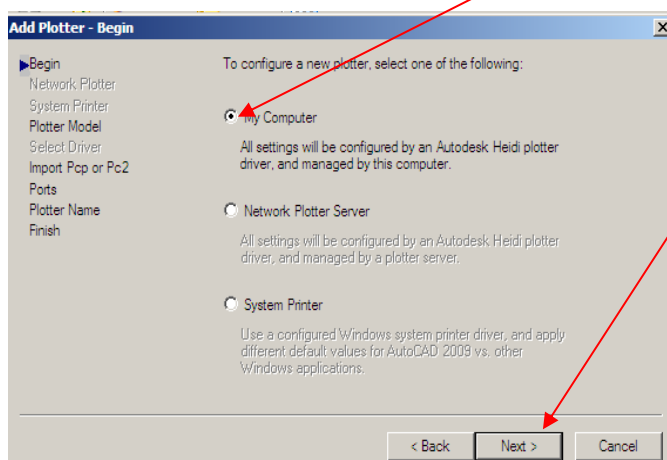
1. SELECT “PLOTTER MANAGER” FROM FILE MENU PULL DOWN. THIS IS ON THE MENU BAR IN VERSION 2006 THROUGH 2008, MENU BAR IN 2009 IS HIDDEN AND CAN BE FOUND BY LOCATING THE RED “A” ON THE TOP LEFT OF THE ACAD WINDOW AND CLICKING ON THE DOWN ARROW NEXT TO IT. WHEN THIS WINDOW OPENS, DOUBLE “ADD A PLOTTER WIZARD” TO START INSTALLATION



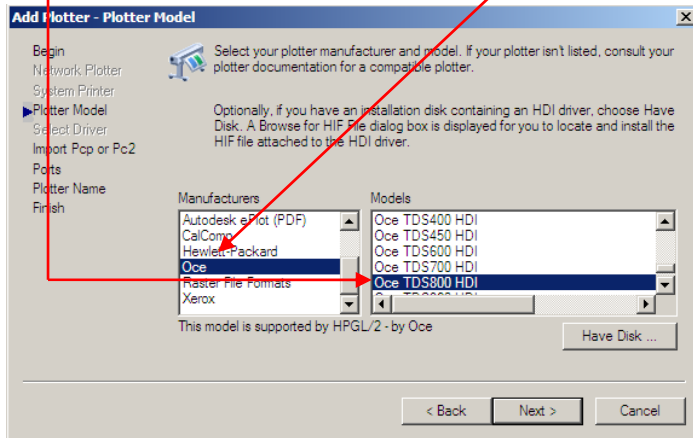
2. SELECT NEXT FROM ADD A PLOTTER INTRODUCTION DIALOGUE.



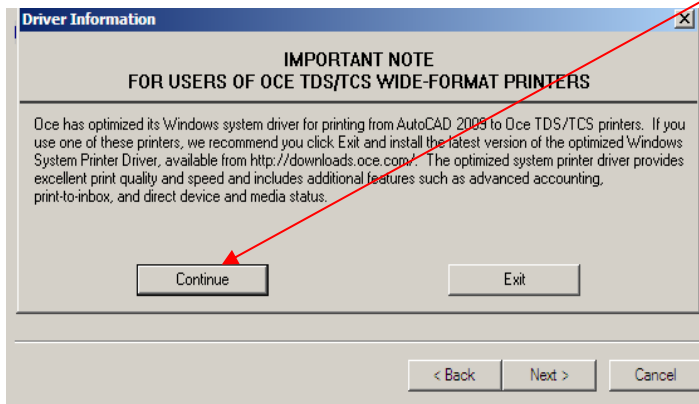
3. ON “ADD PLOTTER – BEGIN” SELECT “MY COMPUTER”, CLICK NEXT.



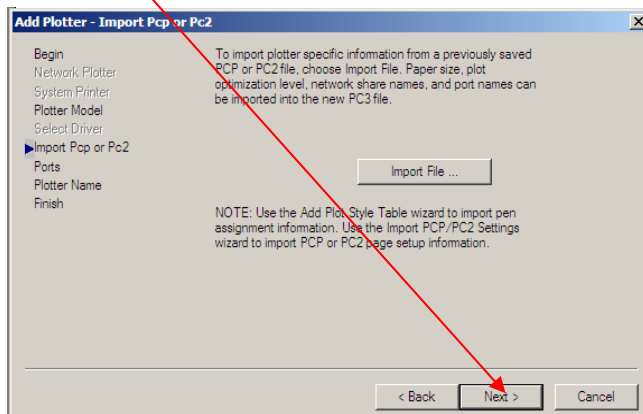
4. FROM "PLOTTER MODEL" SCREEN, SELECT "OCE" FROM MANUFACTURER BLOCK AND "TDS 800 HDI" FROM MODELS BLOCK. CLICK NEXT.



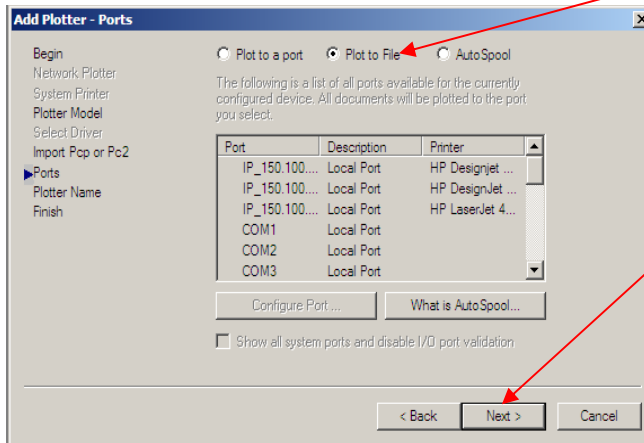
5. WHEN "DRIVER INFORMATION" WARNING APPEARS CLICK "CONTINUE".



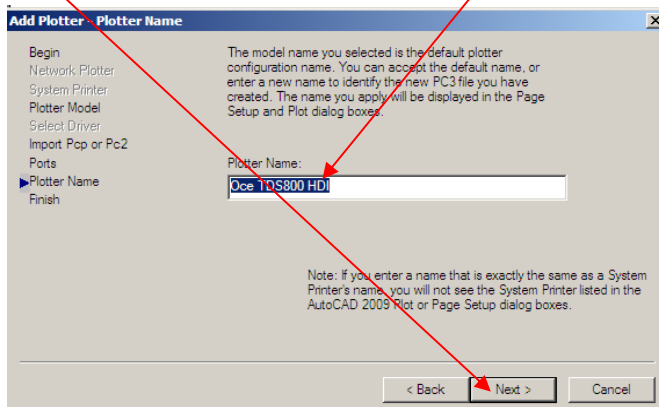
6. CLICK NEXT ON THE "ADD PLOTTER - IMPORT PCP OR PC2" SCREEN.



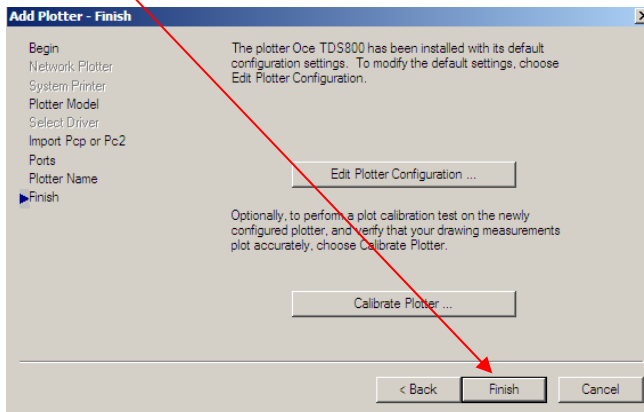
7. ON THE “ADD PLOTTER - PORTS” SCREEN SELECT “PLOT TO FILE”, CLICK NEXT.



8. ENTER “TRIANGLE REPRO” AFTER TDS 800 HDI IN “ADD PLOTTER - PLOTTER NAME” WINDOW, (YOU MAY ENTER YOUR OWN PRINTER IDENTIFIER HERE IF YOU WISH.) CLICK NEXT.



9. CLICK FINISH



YOU HAVE NOW CREATED A PLOTTER FOR PRINTING AT TRIANGLE.